

mx\_ pergola classic



For all those, who have grandiose plans even if it is wet and windy.



markilux

The best under the sun



### Pergola awning

maximum 600 × 450 cm  
maximum 500 × 600 cm

### Options

coloured lighting (RGB-WW),  
LED-Line guide tracks,  
shadeplus,  
wind protection/extra privacy,  
round/square posts,  
telescopic posts,  
ballast boxes,  
coupled awning

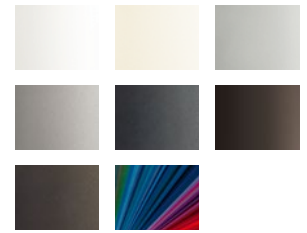
### Fantastic views even in bad weather

When the pergola awning is retracted, there is no glass roof construction obscuring the sky and the view to the outside remains unobstructed.

### markilux shadeplus

The additional vertical blind integrated in the front profile simply blocks out low-lying sun and the glances of inquisitive neighbours.

### Awning colours



### Closed full cassette

The cover disappears completely inside the round cassette, Ø 187 mm, and is ideally protected. The only thing that is more impressive than the look itself is the fact that the technology works perfectly.

### Awning cover fabrics



### markilux tracfix

One of many markilux refinements: the lateral cover guidance system that leaves no gap between the cover and the guide track. Gives an overall better appearance and improves wind stability.