



This will stand on its own
two feet for you.





Awning system

depending on the awning model up to 60 m², as a coupled unit even larger areas are possible

Arm technology

depends on the awning model

Options

depends on the awning model
coloured lighting (RGB-WW) and shadeplus,
uno (only one awning/ pergola),
flex (with ballast boxes),
round / square posts,
footplate cover,
coupled system

markilux syncra pergola

With the additional posts at the front and the tracfix lateral cover guidance system, this option offers particular advantages in terms of size and wind stability.



markilux syncra flex

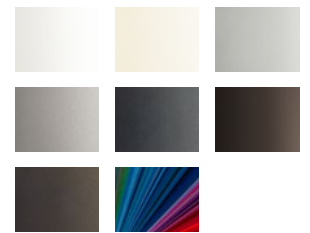
The ballast boxes allow installation without concrete foundations on site.



markilux syncra uno

Two feet. One awning. No problem! The markilux syncra uno proves itself a stable base even with just one "wing".

Awning colours



Awning cover fabrics

