

MX_2



Fascinating in form.
And function.



markilux
The best under the sun



Cassette awning

maximum 600 × 300 cm
maximum 500 × 350 cm

Arm technology

bionic tendon

Options

coloured lighting (RGB-WW),
LED-Line cassette,
colour combinations

Plain and simple. Envable.

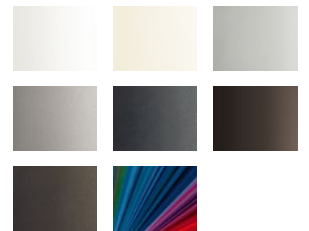
When closed, the markilux MX-2 seems to be made in one single piece.
With or without LED lighting. Product design – at its best.



markilux MX-2 colour

Brilliantly matched and perfectly “covered”: ten fashionably modern colour combinations mean individuality and personality, which complement the architecture of the building, can be both appreciated and experienced.

Awning colours



Awning cover fabrics



markilux designer awnings. Made in Germany.
Create the most alluring shade in the world.