



A great composition
with a brilliant ensemble.



reddot winner 2023

markilux

The best under the sun



Clear form. Soft curves.

For contemporary architecture – and people who place a high demand on design, functionality and durability.



Individual options

The all-round screen profile is available in selected colours and underlines – any way you wish – individuality, taste and style.

Cassette awning

maximum 700 × 350 cm
maximum 600 × 400 cm

Arm technology

bionic tendon

Options

coloured lighting (RGB-WW),
LED-Line cassette,
LED-Spots end caps,
LED-Spots front profile,
external lights,
colour combinations,
coupled awning

The interplay of attractive awning design and sophisticated LED technology

Designed to provide shade for large areas during the day and magical moments in the evening. The markilux MX-4 fulfils the desire for sophisticated outdoor living at any time of day.



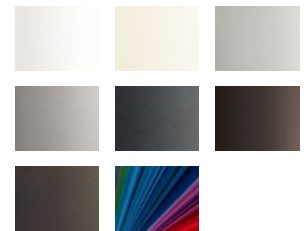
markilux MX-4 wall lights

In good shape – and perfectly coordinated with the awning design.

Magical trio. Light. Shape. Function.

markilux MX-4 wall lights enhance outdoor living with a uniform overall appearance during the day and atmosphere-creating light in the evening. They can be directed either upwards, downwards or in both directions.

Awning colours



Awning cover fabrics



Magical worlds full of atmosphere

Outdoor living in a new light. And colour. Explore your options now at markilux.com

markilux designer awnings. Made in Germany.
Create the most alluring shade in the world.