

MX_970



For everyone
who loves all-round beauty.



markilux
The best under the sun



Cassette awning

maximum 600 × 300 cm
maximum 500 × 350 cm

Arm technology

bionic tendon

Options

coloured lighting (RGB-WW),
LED-Line cassette,
colour combinations,
shadeplus

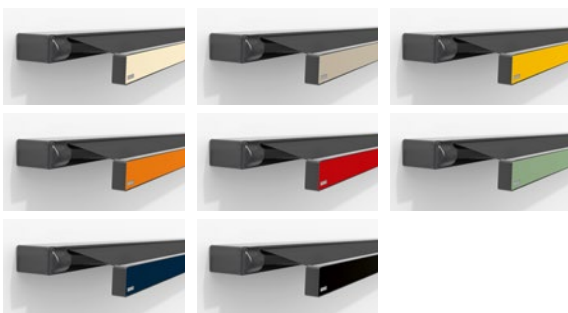
markilux shadeplus

For more protection from prying eyes and the glare of the sun, the optional vertical blind in the front profile is bound to impress.



In the evening. In the best possible light.

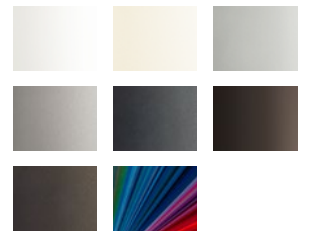
The dimmable LED-Line (RGB-WW) in the cassette makes for a stylish ambience during the course of the evening.



For those who love a world of colour

The colours of the cassette and front screen profile can be mixed and matched at will. There are further accentuated, contrasting colours available for the screen profile.

Awning colours



Awning cover fabrics



markilux designer awnings. Made in Germany.

Create the most alluring shade in the world.

markilux.com